

LAKER SUBDIVISION

TAXING UNIT 27

IN SOUTH OGDEN CITY

PREFIX 06-136

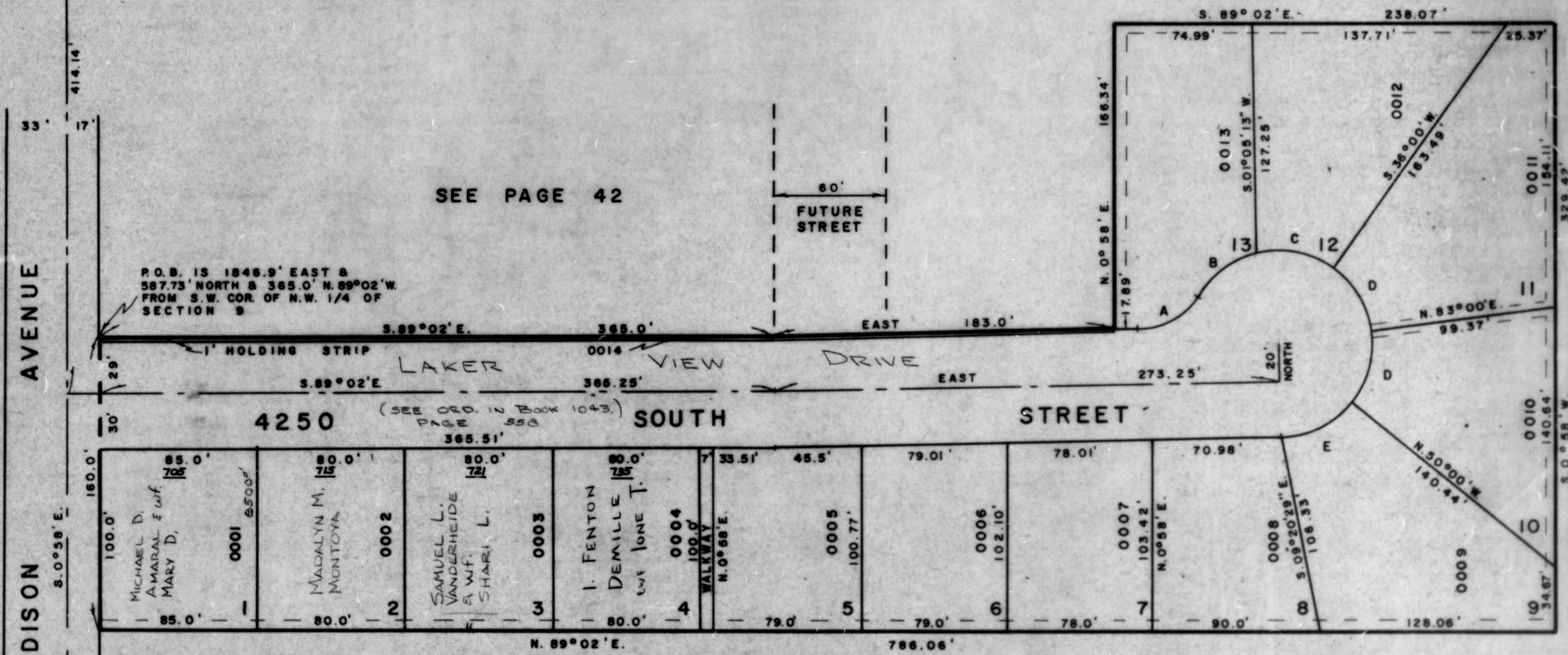
SCALE 1" = 50'

4200 SOUTH STREET

EXCEPT WHERE OTHERWISE SHOWN
ALL LOTS ARE OWNED BY
BOARD OF EDUCATION OF WEBER COUNTY
SCHOOL DISTRICT

CURVE DATA				
A	B	C	D	E
Δ = 58°02'03"	Δ = 41°02'03"	Δ = 53°00'	Δ = 47°00'	Δ = 50°00'
R = 35.0'	R = 50.0'	R = 50.0'	R = 50.0'	R = 50.0'
T = 19.41'	T = 18.71'	T = 24.93'	T = 21.74'	T = 23.32'
L = 35.45'	L = 35.81'	L = 46.25'	L = 41.02'	L = 43.63'
LC = 33.95'	LC = 35.05'	LC = 44.62'	LC = 39.87'	LC = 42.26'

SEE PAGE 42



SEE PAGE 42

R.O.B. IS 1846.9' EAST &
587.73' NORTH & 365.0' N.89°02'W.
FROM S.W. COR. OF N.W. 1/4 OF
SECTION 9

(SEE ORD. IN Book 1043.)
PAGE 550

SEE PAGE 42

FOR COMPLETE ENG. DATA
SEE ORIG. DED. PLAT IN
BOOK 17, PAGE 69

7' PUBLIC UTILITY EASEMENTS
EACH SIDE OF PROPERTY LINES
AS INDICATED BY DASHED LINES